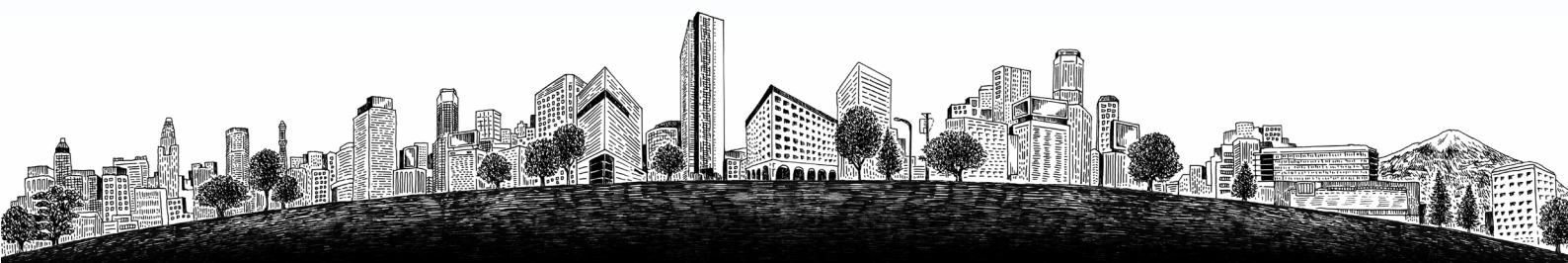


TOYOTA

FUDOSAN

Bringing dreams and enrichment
to communities



Corporate Profile

Bringing dreams and enrichment to communities

Putting the customer first and contributing to the development of better communities in order to be a company that society trusts.

MESSAGE



President
Tomohide Yamamura

We were founded in 1953 as a member of the Toyota Group.

"Bringing dreams and enrichment to communities: Putting the customer first and contributing to the development of better communities in order to be a company that society trusts." With the philosophy and aspirations embodied in these words, we are developing our real estate business in three areas - Tokyo, Nagoya and Osaka.

In recent years, we have expanded the scope and area of our business to include redevelopment projects around Fuji Speedway and arena construction projects in the Odaiba area, Tokyo.

In April 2022, we changed our company name from "Towa Real Estate" to "TOYOTA FUDOSAN", in order to take on further challenges as a developer in the Toyota Group looking to the future.

Furthermore, in January 2024, we established a new Tokyo Head Office to further strengthen our business in the Tokyo area and started a dual head office structure in Nagoya and Tokyo.

Thank you for your continuing support and encouragement.

HISTORY

Aug 1953	○	"Towa Real Estate Co., Ltd." (capital: 150 million yen) established through joint capital investment of three companies: Toyota Motor Co., Ltd. (current Toyota Motor Corporation), Toyoda Automatic Loom Works, Ltd. (current Toyota Industries Corporation), and Nisshin Tsusho (current Toyota Tsusho Corporation)
Nov 1955	○	Completion of "Toyota Building" in front of Nagoya Station
Apr 1962	○	Completion of "Osaka Toyota Building" in Shinsaibashi, Osaka
Jul 1973	○	Completion of "Daini Toyota Building" (east and west buildings) in front of Nagoya Station
Jul 1973	○	Completion of "Daini Toyota Building" (east and west buildings) in front of Nagoya Station
Oct 1989	○	Completion of "Century Mita Building" in Mita, Tokyo: the head office building of Tokyo Toyota Motor Corporation (current Toyota Mobility Tokyo, Inc. Mita store), and entrusted with its property management
Dec 2002	○	Completion of "Century Toyota Building" in front of Nagoya Station
Nov 2005	○	Completion of "Towa Maison Kasumori " (70 units)
Sep 2006	○	Completion of "Midland Square" in front of Nagoya Station, as a joint project with Toyota Motor Corporation and The Mainichi Newspapers Co., Ltd., and opening of its office tower
Mar 2007	○	Grand Opening of "Midland Square"
Aug 2007	○	Entrusted with property management of "Toyota Nagoya Building" (current Toyota Home Sakae Building)
Jun 2012	○	Completion of "Nagoya Crosscourt Tower" in front of Nagoya Station, as a joint project with The Mid-Japan Economist. and Nagoya Railroad Co., Ltd. (current Meitetsu City Design Co., Ltd.)
Mar 2014	○	Acquisition of "Kintetsu Shin-Nagoya Building" (current Sakuradori Toyota Building)
Jun 2016	○	Completion of "Symphony Toyota Building" in front of Nagoya Station
Nov 2016	○	Completion of "KIZUNA", a training center for management leaders of the Toyota Group, in Gamagori City, Aich
Jan 2018	○	Acquisition of all shares in Yanagibashi Shokuhin Building Co., Ltd.
Oct 2019	○	Opening of "Nagono Campus" on the old site of the former Nagono Elementary School
May 2020	○	Opening of "axle Ochanomizu" in Ochanomizu, Tokyo
Nov 2021	○	Acquisition of all shares in I.M.A. Co., Ltd.
Apr 2022	○	Change of company name from "Towa Real Estate Co., Ltd." to "Toyota Fudosan Co., Ltd."
Oct 2022	○	Opening of "Fuji Speedway Hotel"
Feb 2023	○	Joint acquisition of the head office building of Toyota Motor Corporation, with Mitsui Fudosan Co., Ltd., and change of its building name to "Toyota Tokyo Building"
Jan 2024	○	Tokyo Head Office is established, and the company transitions to a dual head office structure in Nagoya and Tokyo.

Company Profile

■ Company name	TOYOTA FUDOSAN CO., LTD.
■ Locations	<div>[Nagoya Head Office] 16F, Midland Square, 4-7-1 Meieki, Nakamura-ku, Nagoya City 450-6216 Phone: 052-584-7111 (Main) Fax: 052-584-7117</div> <div>[Tokyo Head Office] axle Ochanomizu, 3-28-5 Kanda Ogawa-machi, Chiyoda-ku, Tokyo 101-0052 Phone: 03-4511-3353 (Main) Fax: 03-6743-9664</div> <div>[Osaka Office] Osaka Toyota Building, 4-3-11 Minami-Senba, Chuo-ku, Osaka City 542-0081 Phone: 06-6261-7331 (Main) Fax: 06-6261-7334</div>
■ Establishment	August 17, 1953
■ Capital	59.45 billion yen
■ Sales	17.35 billion yen (In the fiscal term that ended March 2023)
■ Employees	118 (As of April 1, 2023)
■ Our business	•Development, leasing, and management of office buildings, retail, and other facilities •Investment of securities
■ Shareholders	Toyota Motor Corporation Toyota Industries Corporation DENSO CORPORATION AISIN CORPORATION JTEKT CORPORATION Toyota Tsusho Corporation Aichi Steel Corporation TOYOTA BOSHOKU CORPORATION Toyoda Gosei Co., Ltd. TOYOTA AUTO BODY CO., LTD. Toyota Motor East Japan, Inc. Hino Motors, Ltd. Daihatsu Motor Co., Ltd. TOYOTA MOTOR KYUSHU, INC. TOYOTA HOUSING CORPORATION
■ Subsidiaries	YANAGIBASHI SYOKUHHN BUILDING CO., LTD. TOWA Hospitality Co., Ltd. IMA CO., LTD.

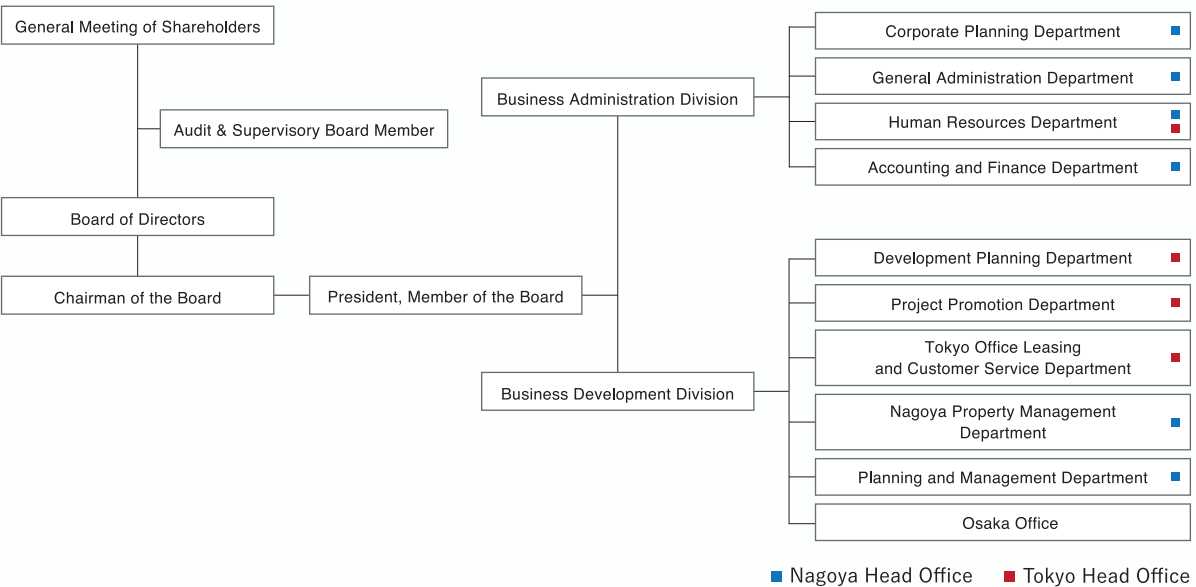
Executives

Chairman of the Board of Directors	: Akio Toyoda
President, Member of the Board of Directors	: Tomohide Yamamura
Member of the Board of Directors	: Jun Karube
	: Akira Onishi
	: Kenta Kon
Audit & Supervisory Board Member	: Keiichi Okuda

Division Officers

Business Administration Division	
Chief Division Officer	: Kaname Shimizu
Business Development Division	
Chief Division Officer	: Akio Majima
Deputy Chief Division Officer	: Haruyoshi Yamada

Organizational Chart



Business information

Nagoya

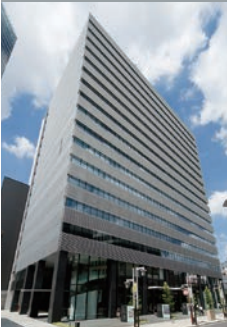
Midland Square



[Location]
4-7-1 Meieki,
Nakamura-ku,
Nagoya

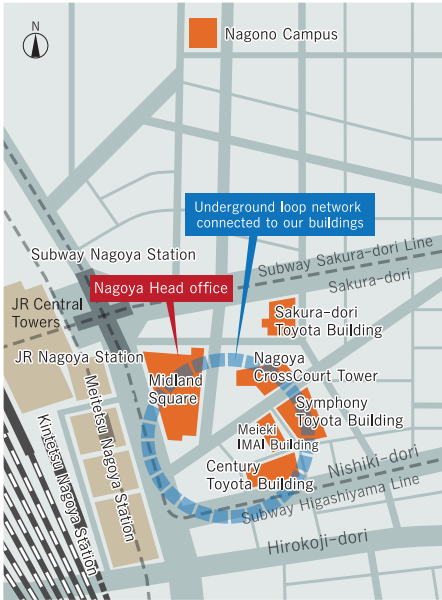
- Completion／September 2006
- Site area／11,643㎡
- Total floor area／193,451㎡
- Floors／
- 【Office tower】47 floors above ground, 6 floors below ground, height 247m
- 【Commercial building】16 floors above ground, 5 floors below ground, height 50m
- Primary uses／office, retail, cinema, hall, conference room, parking lot
- ※Joint project with Toyota Motor Corporation and The Mainichi Newspapers Co., Ltd

Nagoya CrossCourt Tower



[Location]
4-4-10 Meieki,
Nakamura-ku,
Nagoya

- Completion／June 2012
- Site area／2,806㎡
- Total floor area／30,118㎡
- Floors／17 floors above ground, 2 floors below ground, height 72.6m
- Primary uses／office, retail, parking lot
- ※Joint project with The Mid-Japan Economist and Meitetsu City Design Co.,Ltd.



Symphony Toyota Building



[Location]
4-11-27 Meieki,
Nakamura-ku,
Nagoya

- Completion／June 2016
- Site area／4,234㎡
- Total floor area／47,596㎡
- Floors／25 floors above ground, 2 floors below ground, height 115m
- Primary uses／office, retail, cinema, hotel, parking lot

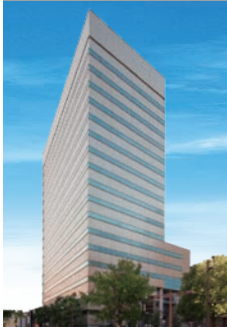
Century Toyota Building



[Location]
4-9-8 Meieki,
Nakamura-ku,
Nagoya

- Completion／December 2002
- Site area／3,169㎡
- Total floor area／35,602㎡
- Floors／16 floors above ground, 3 floors below ground, height 80.5m
- Primary uses／office, retail, parking lot

Sakura-dori Toyota Building



[Location]
4-5-28 Meieki,
Nakamura-ku,
Nagoya

- Completion／March 1993
- Site area／2,723㎡
- Total floor area／28,572㎡
- Floors／18 floors above ground, 1 floor below ground, height 76.7m
- Primary uses／office, retail, parking lot

Meieki IMAI Building



[Location]
4-10-25 Meieki, Nakamura-ku, Nagoya

- Completion／November 1990
- Site area／1,223㎡
- Total floor area／10,619㎡
- Floors／11 floors above ground, 1 floor below ground, height 47.7m
- Primary uses／office, retail, parking lot

Toyota Home Sakae Building



[Location]
1-23-22 Izumi, Higashi-ku, Nagoya

- Completion／December 1970
- Site area／4,879㎡
- Total floor area／38,612㎡
- Floors／7 floors above ground, 3 floors below ground, height 29.2m
- Primary uses／office, parking lot
- ※Entrusted with property management

Nagono Campus



[Location]
2-14-1 Nagono, Nishi-ku, Nagoya

- Open／October 2019
- Site area／6,941㎡
- Total floor area／3,919㎡
- Floors／3 floors above ground
- Primary uses／office, shared office (fixed seats), co-working space (open seating), meeting room, event space, gymnasium, ground, cafeteria

Tokyo

Toyota Tokyo Building



[Location]
1-4-18 Koraku, Bunkyo-ku, Tokyo

- Completion／January 1982
- Site area／7,905㎡
- Floor area／49,154㎡
- No. of floors／19 floors above ground, 5 floors below ground, height 89m
- Primary uses／office, parking lot



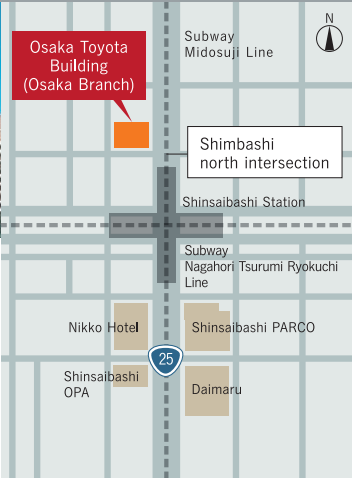
Osaka

Osaka Toyota Building



[Location]
4-3-11 Minamisenba, Chuo-ku, Osaka

- Completion／April 1962
- Site area／2,523㎡
- Total floor area／21,426㎡
- Floors／9 floors above ground, 2 floors below ground, height 31m
- Primary uses／office, retail, hall, conference room, parking lot



Higashifuji

Fuji Speedway Hotel



[Location]
645 Omika, Oyama-cho, Sunto-gun, Shizuoka



Fuji Motor Sports Museum

- Completion／June 2022
- Site area／40,319㎡
- Total floor area／26,718㎡
- Floors／9 floors above ground, 1 floor below ground, one-story villas, two-story wellness building
- Number of guest rooms／120 rooms (115 guest rooms in the accommodation building, 5 villas)
- Attached facilities／4 restaurants, onsen facility, spa, indoor pool, gym, ballroom, meeting room, etc.



Fuji Motor Sports Forest ※image for illustrative purposes

axle Ochanomizu



[Location]
3-28-5 Kanda Ogawa-machi,
Chiyoda-ku, Tokyo

- Open／May 2020
- Site area／1,456㎡
- Total floor area／7,298㎡
- Floors／6 floors above ground, 1 floor below ground
- Primary uses／office, project room, (furnished office), shared office (fixed seats), co-working space (open seating), meeting room, event space, lounge



Gamagori

KIZUNA a training center for management leaders of the Toyota Group



[Location]
3-30-1 Kaiyo-cho, Gamagori City, Aichi

- Completion／November 2016
- Site area／48,832㎡
- Total floor area／9,782㎡
- Floors／3 floors above ground, height 16m
- Primary uses／training facility

"Fuji Motor Sports Forest" Project area



※Fuji MotorSports Museum is located on the first and second floors of the accommodation building



<https://www.toyotafudosan.com>

TOYOTA FUDOSAN CO., LTD.